

T5N
R4E



Office of the Monroe County Surveyor
Trohn Enright-Randolph

Health Services Building
119 West 7th Street
Bloomington, IN 47404
Phone: (812) 349-2570

Dear User,

The following images were obtained in 2017 by the Office of the Monroe County Surveyor from the State Imaging and Microfilm Laboratory at the Indiana State Archives. The field notes and plats for Jackson County are stored on microfilm Reel 7545 at the Indiana State Archives. Each page provided by the State Imaging and Microfilm Laboratory is approximately 18MB. Our office combined the pages by Township & Range and reduced the resulting pdfs. This process may have caused some degradation in quality. We will provide unreduced images of specific pages if required. Please contact us at 812-349-2570 or at SurveyorsOffice@co.monroe.in.us to request a higher quality image of any specific page.

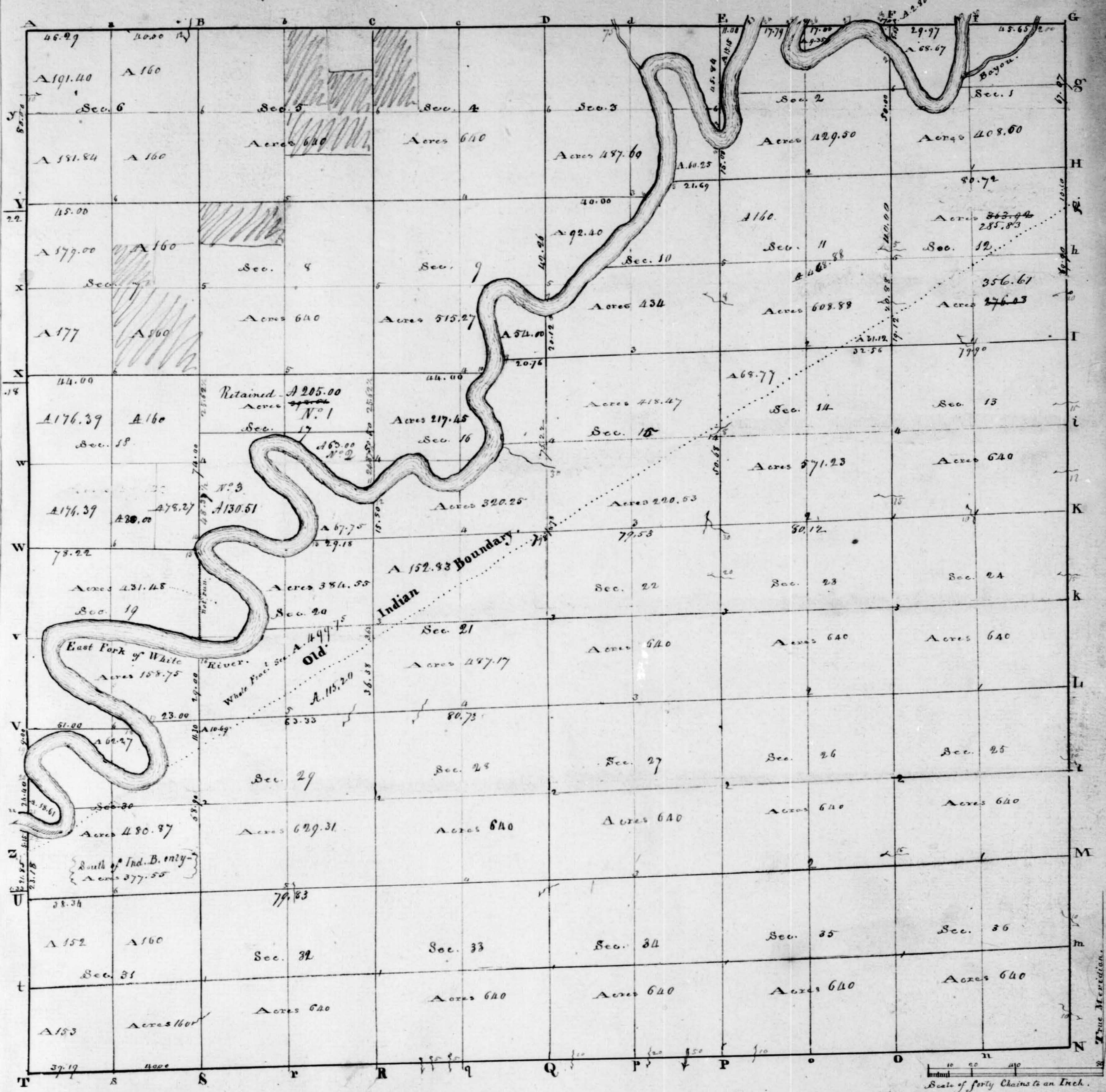
The pdfs are bookmarked with the original page numbers as assigned by the State Imaging and Microfilm Laboratory.

Be prepared to provide the county name, reel number, and the required page numbers when requesting full sized images.

If you would like a DVD of an entire county, please provide us with one DVD per county along with a self-addressed, stamped envelope.

Trohn Enright-Randolph
Monroe County Surveyor

The South face of Sec. 12. was recalculated by instructions from the Commr. of the Genl. Land Office of June 11th 1834 & contains 356.61 acres, & the North face contains 285.83 acres.

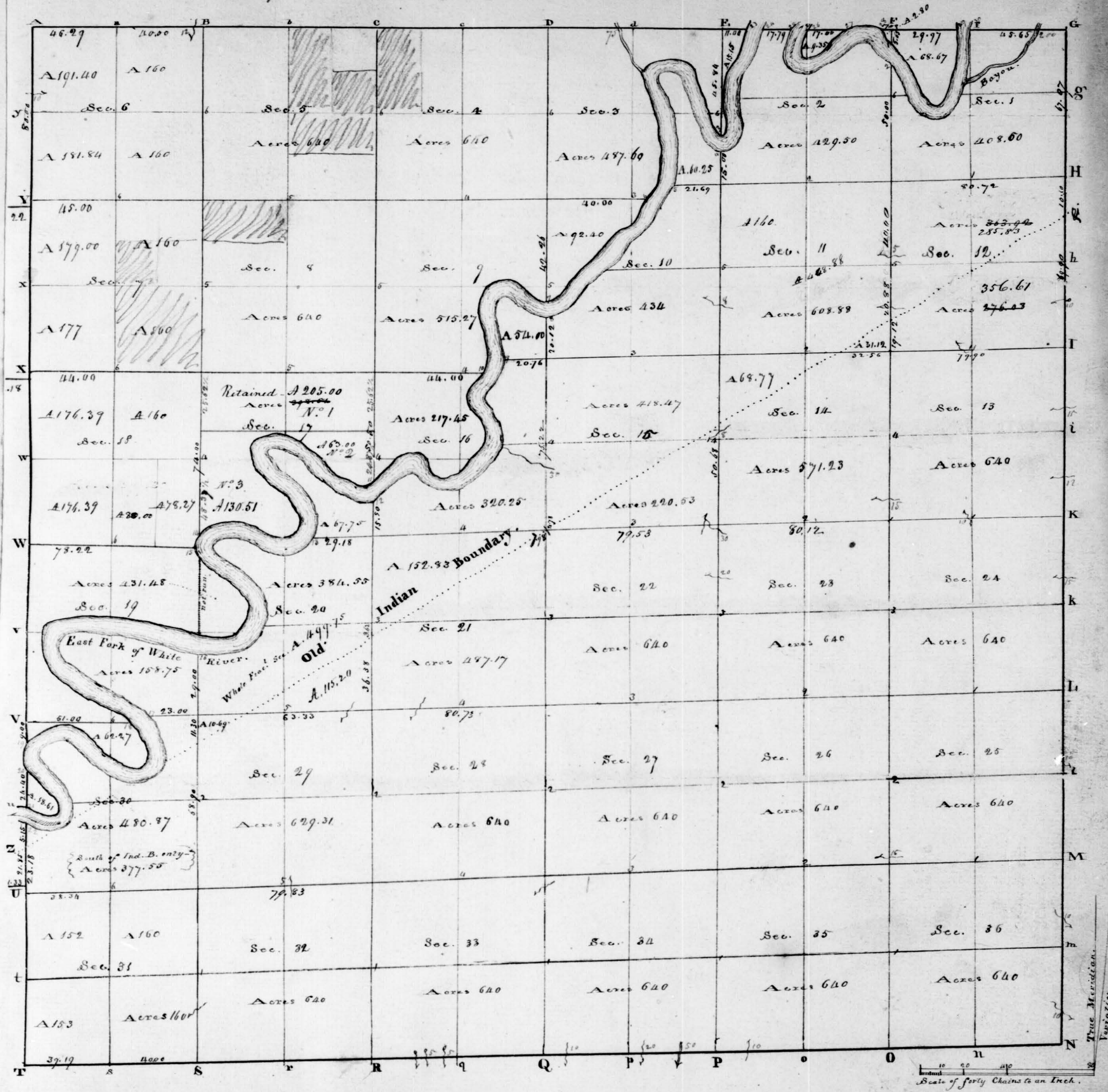


Township N° V. north, Range N° IV East of the 2nd Meridian. Surveyed by W^m Harris 1807 & A. Henrie, 1831

Description of the Quality of the Soil on the interior Sectional Lines.

Between Sections	Quality &c	Between Sections	Quality &c	Between Sections	Quality &c
35.36	Hilly 2 nd rate	33.34	Hilly & poor	4.9	Land level; Oak & hickory
25.35	Same	27.34	Same	4.5	Same
25.26	Same	27.28	Same	31.32	Level good wheat land; Oak & hickory.
24.35	Same	22.27	Same	29.32	Same
23.24	Same	22.22	South half same, the North half	29.30	1 st rate farming land. bottom
13.24	Rolling; good farming land; Buck, sugar.	21.22	Rolling 1 st rate farming land	20.29	Same
13.16	Same - 1 st rate	15.22	Same	19.20	Rich & level
12.13		15.16	Rich; Buck, Oak & poplar Wg. Spice	17.20	Same
11.14	Rolling good farming land; Buck, Sugar &c	10.15	Same	17.18	Same; buck ash &c
1.12	Level Rich; Buck, poplar, Oak, & hickory.	9.10	Same	8.17	Same
1.2	Same.	3.10	Same	7.8	Flat, most of it runs flows
34.35	Up a small brook bottom; hills high & steep.	3.14	Rich & level.	5.8	Flat, Elm, ash, maple
26.35	Hilly & poor.	32.33	Good wheat land; Oak hickory, poplar &c	5.6	Same
26.27	Same	28.33	Same.	6.7	Level; buck, ash, walnut
23.26	Same	28.29	Same.	7.18	Same
22.23	5 th Wg. poor; N & bottom	21.28	Rolling, good farming land; Oak, buck, sugar.	18.19	Same
14.23	Creek bottom - good farming land.	20.21	Level good farming land; Buck, Sugar &c	19.30	Rich & level
14.15	Land Rich; Buck Oak & poplar, Wg. Spice	16.21	Same.	30.31	Bottom; 1 st rate farming land
11.14	Rolling good farming land	16.17	Same		
10.11	Rich; Buck Oak & poplar Wg. Spice	9.16	Rich; Buck, Oak & poplar; Wg. Spice		
2.11	Same	8.9	Level rich & level		
3.3	Same				

The South face of Sec. N. 12. was recalculated by instructions from the Commr. of the Genl. Land Office of June 10th 1834 & contains 356.61 acres, & the North face. Contains 285.83 acres.



Township N. V. North, Range N. IV East of the 2nd Meridian. Surveyed by W. Harris - 1807. & A. Henric, 1834

Description of the Quality of the Soil on the interior Sectional Lines.

Between Sections	Quality &c	Between Sections	Quality &c	Between Sections	Quality &c
35.36	Hilly 2 nd rate	33.34	Hilly & poor	4.9	Land level; Oak & hickory
25.38	Same	27.34	Same	4.5	
25.36	Same	27.28	Same	31.32	Level good wheat land; Oak & hickory.
24.35	Same	22.27	Same	29.32	Same
23.34	Same	22.20	South half same, the North half	29.30	1 st rate farming land. bottom
13.24	Rolling; good farming land; Bush, sugar.	21.22	Rolling 1 st rate farming land	20.34	Same
13.16	Same - 1 st rate	15.22	Same	19.20	Rich & level
12.13		15.16	Rich; Bush, Oak & poplar W.G. Spruce	17.20	Same
11.12	Rolling good farming land; Bush, sugar	10.15	Same	17.18	Same; bush ash &c
1.12	Level Rich; Beech, poplar, Oak, & hickory.	9.10	Same	8.17	Same
1.2	Same.	8.10	Same	7.8	Flat, most of it overflows
34.35	Up a small brook bottom; hills high around	3.4	Rich & level.	5.8	Flat, Elm ash, maple
26.35	Hilly & poor.	32.33	Good wheat land; Oak hickory, poplar &c	5.6	Same
26.27	Same	28.33	Same.	6.7	Level; bush, ash, walnut
23.26	Same	28.29	Same.	7.18	Same
22.23	5 th Hilly poor; N & bottom	21.28	Rolling good farming land; Oak, bush, sugar.	18.19	
14.23	Creek bottom - Good farming land.	20.21	Level good farming land; Bush, sugar &c	19.30	Rich & level
14.15	Land Rich; Bush Oak & poplar; W.G. Spruce	16.21	Same.	30.31	Bottom; 1 st rate farming land
11.14	Rolling good farming land	16.17	Same		
10.11	Rich; Bush Oak & poplar W.G. Spruce	9.16	Rich; Bush, Oak & poplar; W.G. Spruce		
2.11	Same	8.9	Level rich & level		
2.3	Same				

North Line continued

5.50 Brook 5 Links wide course South, West -
 28.50 Beech 15 Inches dia.
 40.00 Set a half mile post from which a Beech 6 Inches dia. bears S 32 W 76 Links & a gum 20 Inches dia. bears N 14 W 11 Links
 70.10 W. Oak 20 Inches dia.
 80.00 Set post corner of Sec. N. 13 T. 14 S. R. 3. E from which a Beech 20 Inches dia. bears S 2 E 29 Links to Beech 24
 Inches dia. bears N 57 W 79 Links - Level Beech Timbered Land Under brush Spruce -

North Line continued

40.00 Set a half mile post from which a Hickory 20 Inches dia. bears N 88 E 16 1/2 Links & a Dogwood 6 Inches dia.
 bears N 35 W 3 Links -
 50.15 W. Oak 15 Inches dia.
 60.00 Set post corner of Section N. 14 T. 14 S. R. 3. E from which a Dogwood 6 Inches dia. bears S 60 E 2 Links
 to W. Oak 10 Inches dia. bears S 37 W 19 Links over brushy level Oak Timbered land -

North Line continued

40.00 Set a half mile post from which a Hickory 20 Inches dia. bears S 25 W 74 Links & a Oak 10 Inches dia.
 bears N 42 W 7 Links -
 80.00 Set post corner of Towns 4 & 5 Ranges 3 & 4 East from which a B. Oak 40 Inches dia. bears S 30 E 32
 Links to Beech 10 Inches dia. bears S 60 W 29 Links - this mile over level Oak & Hickory Timbered land very brush

Between Towns 4 & 5 North Range 3 East of 2nd Meridian

27.00 20 Inches dia.
 40.00 Set a half mile post from which a Locust 15 Inches dia. bears S 80 E 40 Links to Beech 20 Inches dia.
 bears N 52 E 21 1/2 Links -
 72.00 Set post corner of Section N. 36 T. 15 S. R. 3. E. on the Indian boundary on the bank of W. River
 from which a W. Oak 20 Inches dia. bears N 20 E 16 Links to Hickory 20 Inches dia. bears S 30 W 11 Links
 this mile over Rich level land under brush Spruce -

S. Boundary T. 5. N. R. 4 E. Random

East Between Towns 4 & 5 Range 4 East no Random
 40.00 Set a temporary half mile post -
 80.00 Set a temporary mile post - over Rich level Oak & Hickory Timbered land -

East Line continued

40.00 Set a temporary half mile post -
 80.00 Set a temporary mile post - Land the same quality -

East Line continued

27.00 Spring course South, East -
 32.25 Spring run 5 Links course South East
 35.00 Spring run 5 Links wide course South, West -
 40.00 Set temporary half mile post -
 80.00 Set a temporary mile post - Level Oak & Hickory Timbered land -

East Line continued

11.00 Brook 10 Links wide course South -
 40.00 Set a temporary half mile post -
 42.00 Brook 20 Links wide course South -
 50.00 Brook 50 Links wide course South, West -
 80.00 Set a temporary half mile post - Level land -

East Line continued

10.50 Brook 10 Links wide course North, West -
 40.00 Set a temporary half mile post -
 80.00 Set a temporary mile post - this mile over very thin broken soil - Timber Oak hills very high -

East Line continued

40.00 Set a temporary half mile post—

79.19 Intersect the North & South line 1/4 mile South of the Town Corner Land level Beech timber—

Sept 30th 1806

North Between Towns 3 & 4 Range 4 & 5 East of 2nd Meridian

14.60 Brook 10 Links wide course South, East—

40.00 Set a half mile post from which a Hickory 8 Inches dia. bears S 19 N 22 Links & a Beech 10 Inches dia. bears S 62 E 28 Links

45.80 Beech 20 Inches dia.

52.50 Brook 10 Links wide course South, East.

80.00 Set post corner of Sec. N° 25 & 36 T 5 N. R. 4 E from which a Beech 20 Inches dia. bears S 44 W 62 Links
& a Beech 6 Inches dia. bears N 22 W 15 Links— This mile over level Beech timbered land—

North Line continued

40.00 Set a temporary half mile post from which a Dogwood 5 Inches dia. bears N 22 W 10 Links.

& an Ironwood 6 Inches dia. bears S 17 W 34 Links—

42.00 Brook 10 Links wide course South, East

44.10 Oak 20 Inches dia.

80.00 Set post corner of Sec. N° 24 & 25 T 5 N. R. 4 E from which a Oak 15 Inches dia. bears S 34 E 15 Links
& a Maple 15 Inches dia. bears N 32 E 31 Links— This mile over thin broken, brushy Oak timbered soil—

North Line continued

40.00 Set a half mile post from which a Oak 6 Inches dia. bears S 85 E 7 Links, and a Dogwood 5 Inches dia. bears N 17 W 13 Links—

50.00 Brook 15 Links wide course West.

56.75 Beech 20 Inches dia.

80.00 Set post corner of Sections N° 24 & 13 T 5 N. R. 4 E from which a Oak 20 Inches dia. bears S 44 W 26 Links & a Beech 14 Inches dia. bears S 34 E 28 Links— Land the same—

North Line continued

20.00 Brook 12 Links wide course West—

24.04 Oak 20 Inches dia.

40.00 Set a half mile post from which a Oak 12 Inches dia. bears S 47 W 11 Links

& a Oak 24 Inches dia. bears N 47 E 18 Links—

46.00 Brook 15 Links wide course West—

80.00 Set post corner of Sections N° 12 & 13 T 5 N. R. 4 E from which a Beech 10 Inches dia. bears S 14 W 23 Links

& a Beech 10 Inches dia. bears N 22 W 22 Links— Rolling Land—

North Line continued

25.50 Spring run 10 Links wide course West—

40.00 Set a half mile post from which a Beech 20 Inches dia. bears S 80 E 8 Links & a Sugar 5 Inches dia. bears N 20 W 8 Links—

69.90 Set post corner of Section N° 12 T 5 N. R. 4 E on the Indian Boundary from which a Beech 20 Inches dia. bears S 39 W 20 Links & a Beech 6 Inches dia. bears N 34 W 6 Links— Rich level Land—

Sept 1st 1806

S. Boundary T. 5 N. R. 4 E. Corrected.

West On true line Between Towns 4 & 5 T 5 N. R. 4 East of 2nd Meridian—

40.00 Set the temporary half mile post on true line for 1/4 Sec. corner from which a Oak 20 Inches dia. bears S 30 E 6 1/2 Links & a Oak 15 Inches dia. bears N 30 W 5 Links—

80.00 Set the temporary mile post on true line for the corner of Sections N° 35 & 36 T 5 N. R. 4 East from which a Oak 10 Inches dia. bears S 2 N 24 Links & a Beech 6 Inches dia. bears N 36 W 21 Links—

West Line continued—

40.00 Set the temporary half mile post on true line for 1/4 Sec. corner from which a Oak 12 Inches dia. bears S 57 W 27 Links & a Oak 15 Inches dia. bears N 30 E 26 Links—

80.00 Set the temporary mile post on true line for the corner of Sections N° 34 & 35 T 5 N. R. 4 East from which a Beech 10 Inches dia. bears S 9 E 21 Links & a Oak 10 Inches dia. bears N 4 E 27 Links—

East West Line continued

40. 40.00 Set the temporary half mile post on true line from which a Beech 10 Inchs dia. bears N 17 W 25 Links
 79. To a Beech 10 Inchs dia. bears S 20 E 8 Links

80.00 Set the temporary mile post on true line for the corner of Sec. N° 33 T 34. Town 5 N. R. 4 E
 from which a Beech 6 Inchs dia. bears S 82 E 20 Links. a Beech 6 Inchs dia. bears S 10 E 19 Links

West Line continued

45. 40.00 Set the temporary half mile post on true line for the corner from which a Hickory 10 Inchs dia bears
 N 60 W 20 Links To a Oak 15 Inchs dia. bears S 10 W 10 Links

80. 80.00 Set the temporary mile post on true line for the corner of Sec. N° 32 T 33. S. N. R. 4 E from which a Oak
 15 Inchs dia. bears N 53 W 35 Links To a Oak 20 Inchs dia. bears N 52 E 18 Links

West Line continued

40. 40.00 Set the temporary half mile post on true line for the corner from which a Oak 20 Inchs dia. bears
 N 27 W 33 Links To a Hickory 10 Inchs dia. bears N 33 E 33 Links

80. 80.00 Set the temporary mile post on true line for the corner of Sec. N° 31 T 33. S. N. R. 4 E
 from which a Hickory 10 Inchs dia. bears S 64 E 19 Links. a Hickory 8 Inchs dia. bears N 26 W 17 Links

West Line continued

40.00 Set the temporary half mile post on true line for the corner from which a Hickory 10 Inchs dia. bears
 N 78 E 11 Links To a Oak 12 Inchs dia. bears S 78 W 11 Links

Town Corner

North Between Towns 5 & 6 North. Range 3 & 4 East of 2nd Meridian. Sec 36

80. 40.00 Set a half mile post from which a Oak 40 Inchs dia. bears S 28 E 36 Links To a Hickory 8 Inchs dia. bears
 N 52 W 7 Links

74.60 Beech 20 Inchs dia.

80.00 To a Beech 8 Inchs dia. corner of Sec. N° 36 T 25. S. N. R. 3 E. Leave this mile over Rich level land

North Line continued Sec 25

21.85 Set post on the Indian boundary from which a Oak Walnut 40 Inchs dia. bears S 3 E 24 Links

To a Blue Ash 6 Inchs dia. bears N 34 E 16 Links

Oct 2 & 1864.

E. Boundary T. 2 N. R. 4 E.
 North Between Towns 2 & 3 North in Ranges 4 & 5 East of 2nd Meridian

25.00 Brook 30 Links wide. course West

37.50 Brook 10 Links wide. course South East

40.00 Set a half mile post from which a Beech 20 Inchs dia. bears N 65 W 24 Links To a Sugar 10 Inchs dia. bears S 65 E 16

50.00 Brook 10 Links wide. course South West

80.00 Set post corner of Sec. 25 T 26. S. N. R. 4 E. from which a Beech 10 Inchs dia. bears S 60 E 9 Links

To a Beech 6 Inchs dia. bears S 65 W 15 Links. Meeting forming land - Timber Beech, Sugar, Oak & Hickory

North Line continued

40.00 Set a half mile post from which a Sugar 8 Inchs dia. bears N 73 E 17 Links To a Mulberry 10 Inchs dia. bears
 N 70 W 23 Links

80.00 Set post corner of Sec. N° 24 T 23. S. N. R. 4 E. from which a Sugar 10 Inchs dia. bears N 88 E 5 Links
 To a Sugar 7 Inchs dia. bears N 10 W 21 Links. Land the same

North Line continued

40.00 Set a half mile post from which a Sugar 5 Inchs dia. bears S 11 E 16 Links To a Poplar 4 Inchs dia. bears N 23 W 12 Links

80.00 Set post corner of Sections N° 24 T 13. S. N. R. 4 E from which a Beech 15 Inchs dia. bears N 60 W 7 Links
 To a Oak 15 Inchs dia. bears N 57 E 18 Links

Land the same - Timber Beech, Oak & Hickory

West Line continued

40.00 Set the temporary half mile post on true line from which a Beech 10 Inches dia. bears N 17 W 25 Links
to Beech 10 Inches dia. bears S 40 E 8 Links

80.00 Set the temporary mile post on true line for the corner of Sec. N° 33 T 34 S. Town 5 N. R. 4 E
from which a Beech 6 Inches dia. bears S 82 E 20 Links. a Beech 6 Inches dia. bears S 10 E 19 Links

West Line continued

40.00 Set the temporary half mile post on true line for 1/4 Sec. corner from which a Hickory 10 Inches dia. bears S 60 W 20 Links
to B. Oak 15 Inches dia. bears S 70 W 10 Links

80.00 Set the temporary mile post on true line for the corner of Sec. N° 32 T 33 S. N. R. 4 E from which a B. Oak
15 Inches dia. bears N 83 W 35 Links to B. Oak 20 Inches dia. bears N 52 E 18 Links

West Line continued

40.00 Set the temporary half mile post on true line for 1/4 Sec. corner from which a B. Oak 20 Inches dia. bears
N 27 W 33 Links to Hickory 10 Inches dia. bears N 33 E 33 Links

80.00 Set the temporary mile post on true line for the corner of Sec. N° 31 T 32 S. N. R. 4 E
from which a Hickory 10 Inches dia. bears S 64 E 12 Links. a Hickory 8 Inches dia. bears N 26 W 17 Links

West Line continued

40.00 Set the temporary half mile post on true line for 1/4 Sec. corner from which a Hickory 10 Inches dia. bears
N 78 E 4 Links to B. Oak 12 Inches dia. bears S 78 W 11 Links

79.19 Town corner

North Between Towns 5 & 6 North. Range 3 & 4 East of 2nd Meridian. Sec 36

35.90 Hickory 10 Inches dia.

40.00 Set a half mile post from which a B. Oak 10 Inches dia. bears S 28 E 36 Links to Hickory 8 Inches dia. bears
N 52 W 7 Links

74.60 Beech 20 Inches dia.

80.00 To a Beech 8 Inches dia. corner of Sec. N° 36 T 25 S. N. R. 3 E. Leave this mile over Rich level land

North Line continued Sec 25

21.85 Set post on the Indian boundary from which a B. Walnut 40 Inches dia. bears S 3 E 24 Links

to Blue Ash 6 Inches dia. bears N 84 E 16 Links

Oct 24 1864.

C. Boundary L. 2 N. R. 4 E,
North Between Towns 2 & 3 North in Ranges 4 & 5 East of 2nd Meridian

25.00 Brook 30 Links wide. course West

37.50 Brook 10 Links wide. course South East

40.00 Set a half mile post from which a Beech 20 Inches dia. bears S 65 W 24 Links to Sugar 10 Inches dia. bears S 65 E 16 Links

50.00 Brook 10 Links wide. course South West

80.00 Set post corner of Sec. 25 T 36 S. N. R. 4 E from which a Beech 10 Inches dia. bears S 60 E 9 Links

to Beech 6 Inches dia. bears S 65 W 15 Links. Meeting farming land - Timber Beech, Sugar, Oak & Hickory

North Line continued

40.00 Set a half mile post from which a Sugar 5 Inches dia. bears N 73 E 17 Links to Mulberry 10 Inches dia. bears
N 70 W 23 Links

80.00 Set post corner of Sec. N° 34 T 25 S. N. R. 4 E from which a Sugar 10 Inches dia. bears N 88 E 5 Links
to Sugar 7 Inches dia. bears N 40 W 21 Links. Land the same

North Line continued

40.00 Set a half mile post from which a Sugar 5 Inches dia. bears S 11 E 16 Links to Poplar 10 Inches dia. bears N 23 W 12 Links

80.00 Set post corner of Sections N° 24 & 25 - T 2 N. R. 4 E from which a Beech 15 Inches dia. bears N 60 W 7 Links
to B. Oak 15 Inches dia. bears N 57 E 18 Links

Land the same - Timber Beech, Oak & Hickory

Township N. 3. North Range N. 2. East of the Meridian.

May 20th 1807

North Between Sections 35 & 36 S. 3. 8. N. 4. E.

40.00 Set half mile post - From which a Maple 13.3.2 bears S 23 E 11 links
And a Beech 2.4.2 bears S 22 W. 30 links.

20.00 Set post corner to sections 25, 26, 27, 28 S. 3. 8. N. 4. E. From which
a Sugar 12.3.2 bears S 75 E 24 links - And a Poplar 18.3.2 bears
S 66 W 21 links. - Land tiller and 3rd rate farming land. Timber
Beech, Chestnut, Oak, Sugar, W & 73. Oak &c

East. On a Wanders line between sections 25 & 36 S. 3. 8. N. 4. E.

40.00 Set temporary 1/2 Sec. post.

21.00 Intersected S & S. line 1.66 links South of Sec. corner - Land very
broken and hills very high. 1st crop. 3rd rate farming lands -
Timber same.

West. On a True line between sections 25 & 36 S. 3. 8. N. 4. E.

40.00 Set temporary post at Average Distance for 1/2 Section corner From
which a Chestnut Oak 27.3.2 bears S. 29 W. 22 links - And another
24.3.2 bears S 23 E 18 links.

21.00 To Section corner.

North Between sections 25 & 26 S. 3. 8. N. 4. E.

40.00 Set half mile post - From which a Poplar 36.3.2 bears S. 27 E 14 links
And a Chestnut Oak 36.3.2 bears S. 30 W. 34 links.

20.00 Set post corner to sections 25, 26, 27, 28 S. 3. 8. N. 4. E. From which a
W. Oak 7.3.2 bears S 57 W. 9 links - And another 7.3.2 bears S 56 E 20 links.
This mile 3rd rate hills - Timber same - 3rd rate farming land.

East. On a Wanders line between sections 25 & 28 S. 3. 8. N. 4. E.

40.00 Set temporary 1/2 Sec. post.

Township N. 3. North Range N. 2. East of the Meridian Continued

21.63 Intersected S & S. line 1.66 links South of section corner - This mile very
broken & hilly - Timber same - Very brushy 3rd rate land.

West. On a True line between sections 26, 28 S. 3. 8. N. 4. E.

40.00 Set temporary post at Average Distance for 1/2 Section corner - From which
a W. Oak 12.3.2 bears S 20 W. 18 links - And a Maple 18.3.2 bears S 88 E
14 links.

21.63 To Section corner.

May 22nd 1807

E. 40

North Between sections 34 & 35 S. 3. 8. N. 4. E.

2.00 A Brook 15 links wide Course West.

40.00 Set half mile post - From which a W. Oak 26.3.2 bears S 18 E 28 links
And a Beech 14.3.2 bears S. 12 W. 44 links.

20.00 Set post corner to Sec. 26, 27 & 34, 35 S. 3. 8. N. 4. E. From which a W. Oak
27.3.2 bears S 19 E 11 links - And a Dogwood 6.3.2 bears S 39 W 32 links
This mile up a small Brook - Bottom level - Timber Oak, Sugar
Oak & Poplar &c.

E. 40

East. On a Wanders line between sections 26 & 35 S. 3. 8. N. 4. E.

40.00 Set temporary 1/2 Sec. post.

79.47 Intersected S & S. line 89 links North of section corner - This mile very
hilly - Timber on the hills is principally Chestnut Oak & in the hollows
Beech, Poplar, W & 73. Oak, Sugar &c

West. On a True line between sections 26 & 35 S. 3. 8. N. 4. E.

39.73 Set temporary post at Average Distance for 1/2 Section corner - From
which a Beech 4.9.2 bears S 45 E. 9 links - And another 9.3.2 bears S 1 W
33 links.

79.47 To Section corner.

Township N. 5. North Range. N. 4 East of the Meridian Continued

North Between Sections 26 & 27 S. 5. N. 4 E.

40.00 Set half mile post from which a Beech 26 S. 2 bears S 64 E 9 Links.
And another 16 S. 2 bears S 47 W. 49 Links.

40.20 Set post corner to Sections 22, 23 & 26, 27 S. 5. N. 4 E. - From which a
Hickory 7 S. 2 bears S 49 W. 29 Links - And another 6 S. 2 bears N 66 E
33 Links - Land and Timber same.

East. On a Random line between Sections 23 & 26 S. 5. N. 4 E.

33.00 A Small Beech Course North.

40.00 Set Temporary 1/2 Sec. post.

79.00 Intersected S. 5. N. 4 E. line 45 Links North of Section corner - This mile rolling
land - Timber Oak, Hickory, Beech &c. - Poor farming land.

West. On a true line between Sections 23 & 26 S. 5. N. 4 E.

39.21 Set Temporary post at Average distance for 1/2 Section corner - From
which a W. Oak 12 S. 2 bears S 65 E 19 Links - And another 16 S. 2 bears
S 53 W. 22 Links.

77.00 To Section corner.

North Between Sections 23 & 26 S. 5. N. 4 E.

40.00 Set half mile post - From which a Chestnut Oak 14 S. 2 bears S 27 W.
4 Links - And another 11 S. 2 bears North 3 Links.

77.26 A Small Beech Course N. W.

40.00 Set post corner to Sec. 13, 14, 23, 24 S. 5. N. 4 E. - From which a Sagar
10 S. 2 bears N 47 W. 29 Links - And another 14 S. 2 bears S 49 E
31 Links. Land and Timber same.

East. On a Random line between Sections 13 & 24 S. 5. N. 4 E.

33.00 A Beech 10 lbs wide Course N. W.

40.00 Set Temporary 1/2 Section post.

Township N. 5. North Range. N. 4 East of the Meridian Continued.

40.50 Intersected S. 5. N. 4 E. line 4.92 Links North of Section corner - This mile rolling
land - Timber Oak, Beech, Sugar, Hickory &c. Moulding good farming
land.

West. On a true line between Sections 13 & 24 S. 5. N. 4 E.

40.25 Set Temporary post at Average Distance for 1/2 Section corner - From
which a W. Oak 16 S. 2 bears S 35 W. 19 Links - And a Beech 8 S. 2 bears
N 28 E 23 Links.

40.50 To Section corner.

May 23rd 1807

North Between Sections 33 & 34 S. 5. N. 4 E.

40.00 Set half mile post - From which a Hickory 6 S. 2 bears S 2 W. 25 Links.
And a W. Oak 32 S. 2 bears S 64 E 6 Links.

79.78 A Small Spring Branch Course S. E.

40.00 Set post corner to Sec. 27, 28 & 33, 34 S. 5. N. 4 E. - From which a Sugar
14 S. 2 bears S 2 E 33 Links - And a Dogwood 6 S. 2 bears N 55 E 15 Links
Land part rolling and part hilly - Timber Oak & Hickory - poor
farming land.

East. On Random line between Sections 27 & 34 S. 5. N. 4 E.

40.00 Set Temporary 1/2 Sec. post.

79.31 Intersected S. 5. N. 4 E. line 1.43 Links South of Sec. corner. - This mile 3rd rate
hills - Timber Chestnut Oak &c.

West. On a true line between Sec. 27 & 34.

39.90 Set Temporary post at Average Distance for 1/2 Section corner - From
which a Chestnut Oak 12 S. 2 bears N 41 E. 6 Links - And a W. gum 7 S. 2
bears S 13 E 19 Links.

79.31 To Section corner.

Township N^o 5 North Range N^o 4 East of the Meridian Continued

North Between Sections 27 & 28 S. 5 N. 7 1/2 E.

40.00 Set half mile post - From which a Dogwood 1 S. 2 bears S 26 E. 23 links
And an Iron wood 1 S. 2 bears N. 2 E. 19 links.

80.00 Set Post corner to Sec. 21, 22 & 27, 28 S. 5 N. 7 1/2 E. - From which a W. Oak
18 S. 2 bears S 3 E 41 links - And a Sug. 16 S. 2 bears N 22 W 41 Links
Land and Timber same. 74

East. On a Random line between Sections 22 & 27 S. 5 N. 7 1/2 E.

40.00 Set Temporary 1/2 Sec. post.

79.70 Intersected N & S line 67 links South of Section corner - Land very hilly
and very bushy - Timber same 3rd rate soil.

West. On a True line between Sections 22 & 27 S. 5 N. 7 1/2 E.

39.85 Set Temporary post at average distance for 1/2 Section corner - From
which a W. Oak 26 S. 2 bears S 3 W. 68 links - And a Hickory 6 S. 2
bears N. 3 W. 46 links.

79.70 To Section corner.

1.00

North Between Sections 22 & 23 S. 5 N. 7 1/2 E.

40.00 Set half mile post - From which a Dogwood 3 S. 2 bears N. 39 W 21
links - And a Hickory 6 S. 2 bears S 67 E 30 links.

37.50 A Creek 20 links wide course West.

79.30 A Creek 30 links wide course S. W.

20.00 Set post corner to Sections 14, 15 & 22, 23 S. 5 N. 7 1/2 E. - From which
an Elm 7 S. 2 bears S 67 E 13 links - And another 7 S. 2 bears S 26 W
6 links - The first half mile Broken & poor - The last river bottom
rich and good for farming - Timber - Beech, Sugar, Poplar, etc

East. On a Random line between Sections 14 & 23 S. 5 N. 7 1/2 E.

36.50 A Creek 20 links wide course S. W.

Township N^o 5 North Range N^o 4 East of the Meridian Continued

38.00 A Creek 20 links wide course S. W.

40.00 Set Temporary 1/2 Sec. post

40.50 A Creek 20 links wide course S. W.

42.00 A Creek 20 links wide course S. W.

80.12 Intersected N & S line 59 links North of Section corner - This side
Creek bottom - Good farming land Timber same.

West. On a true line between Sections 14 & 23 S. 5 N. 7 1/2 E.

40.06 Set Temporary post at Average Distance for 1/2 Section corner - From
which a W. Beech 7 S. 2 bears S 27 E 11 links - And another 3 S. 2
bears N. 37 W. 10 links.

80.12 To Section corner.

May 22nd 1807
E. 20

North Between Sections 32 & 33 S. 5 N. 7 1/2 E.

40.00 Set half mile post - From which a Poplar 17 S. 2 bears S 16 W 36
links - And a W. Oak 18 S. 2 bears N. 30 E 70 links.

80.00 Set post corner to Sec. 28, 29, 32, 33 - From which a W. Oak 12 S. 2
bears N. 12 E. 29 links - And another 16 S. 2 bears S 54 W. 17 links.
This side a little rolling - The timber is principally Oak, Hickory
& Poplar - Good wheat land.

4.00

East. On Random line between Sections 28 & 33 S. 5 N. 7 1/2 E.

40.00 Set Temporary 1/2 Sec. post.

80.62 Intersected N & S line 62 links North of Section corner - Land
and Timber same.

West. On a True line between Sections 28 & 33 S. 5 N. 7 1/2 E.

40.31 Set Temporary post at Average Distance for 1/2 Section corner
From which a W. Oak 20 S. 2 bears N 49 W. 18 links - And another

Township, 12^s, North Range, 12^e, East of the Meridian continued

- 27.12 bears S. 70 E 33 links.
- 20.62 To Section corner. E. 00
- North Between Sections 21 & 22 T. 12 N. R. 12 E.
- 20.00 Set half mile post - From which a W. Oak 24 S. 2 bears N. 34 W. 9 links - And another 20 S. 2 bears N. 72 E 16 links.
- 20.00 Set post corner to Sec. 20, 21 & 22, 27 T. 12 N. R. 12 E. - From which a Beech 11.22 bears S. 33 E 11 links - And a W. Oak 36 S. 2 bears N. 65 W 6 links - This side level - Timber same good farming land.
- East On a Random line between Sections 21 & 22 T. 12 N. R. 12 E.
- 30.00 A Beech 10 links wide bears S. W.
- 40.00 Set Temporary 1/2 Sec. post.
- 63.00 A small brook course S. W.
- 80.13 Intersected A North line 120 links North of Section corner - Land rolling - Timber Spruce, Sugar, Poplar 11.4 90 - good farming land.
- West On a True line between Sections 21 & 22 T. 12 N. R. 12 E.
- 40.36 Set Temporary post at Average Distance for 1/2 Section corner - From which a W. Oak 14 S. 2 bears S. 34 E. 5 links - And a Beech 12 S. 2 bears S. 29 E 5 links. E. 00
- North Between Sections 21 & 22 T. 12 N. R. 12 E.
- 40.00 Set half mile post - From which a W. Oak 24 S. 2 bears N. 66 W. 11 links - And a Beech 30 S. 2 bears S. 73 E. 34 links.
- 20.00 Set post corner Sec. 13, 14 & 21, 22 T. 12 N. R. 12 E. - From which a W. Oak 35 S. 2 bears S. 6 W. 20 links - And a B. Gum 18 S. 2 bears N. 10 E. 34 links. This side rolling land - Timber same - First rate farming land - Shrub Spice Sandergum 9 1/2
- East On a Random line between Sections 13 & 22 T. 12 N. R. 12 E.

Township, 12^s, North Range, 12^e, East of the Meridian continued.

- 40.00 Set Temporary 1/2 Section post.
- 44.00 A Spring branch 6 links wide Course East.
- 73.50 A Brook 10 links wide Course N. E.
- 79.23 Intersected A N. 1 line 24 links South of Sec. corner - Land and Timber same.
- West On a True line between Sections 15 & 22 T. 12 N. R. 12 E.
- 39.76 Set Temporary post at Average Distance for 1/2 Section corner - From which a Beech 12 S. 2 bears N. 73 E. 23 links - And a B. Gum 15 S. 2 bears S. 2 E 14
- 79.53 To Section corner.
- North Between Sections 13 & 14 T. 12 N. R. 12 E.
- 13.80 A Creek 15 links wide Course N. W.
- 40.00 Set half mile post - From which a Beech 9 S. 2 bears S. 17 W. 5 links - And another 8 S. 2 bears N. 23 E. 19 links.
- 90.00 Set post corner to Sec. 11, 12 & 13, 14 T. 12 N. R. 12 E. - From which an Elm 11 S. 2 bears N. 6 W. 24 links - And another 5 S. 2 bears S. 6 W. 10 links - Land and Timber same.
- North Between Sec. 11 & 12 T. 12 N. R. 12 E.
- 19.12 Intersected Boundary line - From which a Beech 14 S. 2 bears S. 61 W. 10 links - And another 12 S. 2 bears N. 36 E 49 links - Land rolling - Timber same - good farming land -
- West Between Sections 11 & 14 T. 12 N. R. 12 E.
- 32.56 Intersected Boundary line - From which Intersection a Beech 8 S. 2 bears S. 79 E 11 links - And a Poplar 58 S. 2 bears N. 42 W. 7 links. - Land and Timber same.
- May 25th 1897
- North Between Sections 31 & 32 T. 12 N. R. 12 E.
- 20.00 A Small Brook course S. W.

Township N^o. 5 North Range N^o. 4 East of the Meridian continued

- 27.72 bears S. 70 E. 33 links.
- 20.62 To Section Corner. 2.00
- North Between Sections 28, 29, 30 & 31 S. 8 N. 74 E.
- 40.00 Set Half Mile Post - From which a W. Oak 24 S. 2 bears N. 34 W. 9 links.
And another 20 S. 2 bears N. 72 E. 14 links.
- 20.00 Set Post Corner to Sec. 20, 21 & 22, 29 S. 8 N. 74 E. - From which a Beech 11.22
bears S. 3 E. 11 links - And a W. Oak 36 S. 2 bears N. 65 W. 6 links - This mile
level - Timber same good farming land.
- East On a Random line between Sections 21 & 22 S. 8 N. 74 E.
- 30.00 A Beech 11 links wide bears S. W.
- 40.00 Set Temporary a Sec. post.
- 63.00 A small brook course S. W.
- 20.73 Intersected a V. line 120 links North of Section Corner - Land
rolling - Timber Beech, Sugar, Poplar, Ash &c - good farming land.
- West On a True line between Sections 21 & 22 S. 8 N. 74 E.
- 40.36 Set Temporary post at Average Distance for $\frac{1}{2}$ Section Corner - From
which a W. Oak 12 S. 2 bears S. 34 E. 3 links - And a Beech 12 S. 2 bears
N. 29 E. 5 links. 2.00
- North Between Sections 21 & 22 S. 8 N. 74 E.
- 40.00 Set Half mile post - From which a W. Oak 24 S. 2 bears N. 66 W. 11 links
And a Beech 30 S. 2 bears S. 73 E. 35 links.
- 20.00 Set Post Corner Sec. 13, 14 & 21, 22 S. 8 N. 74 E. - From which a W. Oak
30 S. 2 bears S. 6 W. 20 links - And a B. Gum 12 S. 2 bears N. 10 E. 34 links.
This mile rolling land - Timber same - First rate farming land
Thick Spruce Undergrowth. 9 $\frac{1}{2}$
- East On a Random line between Sections 10 & 22 S. 8 N. 74 E.

Township N^o. 5 North Range N^o. 4 East of the Meridian continued.

- 40.00 Set Temporary $\frac{1}{2}$ Section post.
- 44.00 A Spring branch 6 links wide course East.
- 73.50 A Brook 10 links wide course N. E.
- 79.53 Intersected a V. line 24 links South of Sec. Corner - Land and Timber same.
- West On a True line between Sections 15 & 22 S. 8 N. 74 E.
- 39.76 Set Temporary post at Average Distance for $\frac{1}{2}$ Section Corner - From which
a Beech 12 S. 2 bears N. 73 E. 23 links - And a B. Gum 15 S. 2 bears S. 2 E. 14
- 79.53 To Section Corner.
- North Between Sections 13 & 14 S. 8 N. 74 E.
- 13.50 A Creek 15 links wide course S. W.
- 40.00 Set Half mile post - From which a Beech 9 S. 2 bears S. 17 W. 5 links
And another 8 S. 2 bears N. 23 E. 12 links.
- 20.00 Set post corner to Sec. 11, 12 & 13, 14 S. 8 N. 74 E. From which an Elm
11 S. 2 bears N. 6 W. 24 links - And another 5 S. 2 bears S. 6 W. 10 links
Land and Timber same.
- North Between Sec. 11 & 12 S. 8 N. 74 E.
- 19.12 Intersected Boundary line - From which a Beech 14 S. 2 bears S. 61 W.
10 links - And another 12 S. 2 bears N. 26 E. 49 links. - Land rolling
Timber same - good farming land -
- West Between Sections 11 & 14 S. 8 N. 74 E.
- 32.56 Intersected Boundary line - From which Intersection a Beech 8 S. 2
bears S. 79 E. 11 links - And a Poplar 12 S. 2 bears N. 42 W. 7 links. -
Land and Timber same.
- May 25th - 1807
- North Between Sections 31 & 32 S. 8 N. 74 E.
- 20.00 A small Brook course S. W.

Township No. 5 North Range No. 4 East of the Meridian Continued

40.00 Set half mile post - From which a W. Oak 27 S. D. bears S 2 E 30 links
And a Hickory 6 S. D. bears North 20 links.

80.00 Set post corner to Sec. 29, 30 & 31, 32 S. S. N. 74 E. - From which a W. Oak
13 S. D. bears S 9 W. 31 links - And an Elm 14 S. D. bears N 12 W. 43 links.

Land level - Timber Oak & Hickory - Good wheat land - Sandy Soil.
7.00

East. On a Random line between Sections 29 & 32 S. S. N. 74 E.

40.00 Set Temporary 1/4 Sec. post.

43.30 A Small Brook Course S. W.

79.63 Intersected N. 7 S. line 3 links South of Section corner - Land and Timber
same - Good farming land.

West. On a True line between Sections 29 & 32 S. S. N. 74 E.

39.91 Set Temporary post at Average Distance for 1/4 Section corner - From
which a W. Oak 32 S. D. bears S 40 E 38 links - And a W. Oak 24 S. D. bears
N 9 E. 33 links. 7.00

West. Between Sections 30 & 31 S. S. N. 74 E.

40.00 Set half mile post - From which a W. Oak 7 S. D. bears N. 27 E 4 links
And a Beech 20 S. D. bears N. 37 W. 27

78.35 Intersected N. 7 S. line 1.33 links South of Sec. corner - From which Inter-
section a Beech 10 S. D. bears N. 28 E. 23 links - And another 7 S. D. bears
S 53 W. 40 links - This wide River Bottom - And first rate farming
land - Timber Beech, Sugar, Poplar, Oak, Walnut, Hackberry &c.
6.00

North. Between Sections 29 & 30 S. S. N. 74 E.

40.00 Set half mile post - From which a Beech 30 S. D. bears N. 3 E 32 links
and another 13 S. D. bears S 8 W. 46 links

68.70 Intersected the Boundary line - From which a Beech 18 S. D. bears
N 75 E 3 links - And another 20 S. D. bears S 17 W 31 - Land and Timber

Township No. 5 North Range No. 4 East of the Meridian Continued

same - First rate farming land.

West. Between Sections 20 & 29 S. S. N. 74 E.

40.00 Set half mile post - From which a Beech 10 S. D. bears N. 22 E 14 links.
And a W. Oak 5 S. D. bears S 64 W. 11 links.

63.33 Intersected the Boundary line - From which Intersection a Beech 12 S. D.
bears S 10 W. 13 links - And another 13 S. D. bears N. 88 E 29 links - Land &
Timber same.

North. Between Sections 20 & 21 S. S. N. 74 E.

36.38 Intersected Boundary line - From which intersection a Beech 30 S. D. bears
S 72 W. 38 links - And another 12 S. D. bears North 47 links - This wide level
Timber same - Good farming land.
6.00

North. Between Sections 15 & 16 S. S. N. 74 E.

4.78 Intersected Boundary line - From which a Beech 11 S. D. bears S 20 E 27
links - And another 11 S. D. bears N. 16 W. 12 links.
9.00

West. Between Sections 16 & 21 S. S. N. 74 E.

7.98 Intersected Boundary line - From which Intersection a Beech 18 S. D.
bears N 46 E. 14 links - And a Beech 10 S. D. bears S. 3 W. 17 links - Good
farming land.

North. Between Sections 14 & 13 S. S. N. 74 E.

40.00 Set half mile post - From which a Beech 27 S. D. bears S 71 W. 21 links
And another 14 S. D. bears N. 63 E. 33.

50.68 Intersected the Boundary line - From which intersection a Sugar
13 S. D. bears S 71 E 27 - And a Beech 24 S. D. bears N. 64 W. 12 links
This wide mudling good farming land. - Timber Beech, Sugar
Poplar &c.
9.00

East. On a Random line between Sections 12 & 13 S. S. N. 74 E.

114
Township N^o 3 North Range N^o 2 East of the Meridian Continued

38.00 A small Beech Course S. E.
38.00 A small Beech Course S. E.
40.00 Set temporary 1/2 Sec. post.
79.90 Intersected N. 4. S line 2.28 miles North of Section Corner - This side
part rolling and part level - Timber Beech, Poplar, Ash, &c - Good
farming land.
West. On a true line between Sections 12 & 13 S. 5 N. 74 E.
39.75 Set temporary post at average distance for 1/2 Section corner - From
which a Beech 24 S. 2 bears 520 E 21 miles - And another 18 S. 2 bears
West 22 miles.
79.90 To Section Corner.
Correction of an Cut missed on the Range line between Towns 29 &
30 North Ranges 42 E East.
Set post corner to Sections 13 & 24 S. 5 N. 74 E. - From which a W. Oak
2 S. 2 bears 164 W. 16 miles - And another 14 S. 2 bears N. 34 E 12 miles

Surveyed by

W^m Harris

Deputy Surveyor

115
Township N^o 1 North Range N^o 3 East of the Meridian.

Monday October 6th 1866

North. Between Sec^{ns} 35, 36
15.27 Chestnut Oak 16 In. D.
40.00 9th post - where Beech 10 S. 13 E. 12 - Then wood 50 W 22 on a steep hill -
30.00 Set sec. post where Sugar tree 20 S. 64 W. 49 - And Beech 14 S. 72 E. 32.
Land of this mile exceeding steep hills - Poor and brushy scarcely pro-
fitable.
East. Hands taken between 25, 36.
40.00 Set temp^l 9th post.
79.00 To Range line fell South of post 35 lbs. Land of this mile much as last.
West. Connect 25, 36.
39.50 Move 9th post org. Dist. where Hickory 4. is corner tree on top of
Knob to post.
North. Between 25, 26.
1.00 Run S. W. 25 lbs. - Dry.
5.50 A Run Shrub 15 S. side
22.00 A Run Saw 2 at times
22.55 Chestnut 18 In.
40.00 W. Oak 12 In. is corner tree on hill side.
64.23 C. Oak 12.
72.06 Beech 18.
80.00 Set post where a
Land this mile hilly and brushy - The hills high and steep unfit
for cultivation S. Oak Chestnut &c

Tuesday Oct. 7th Hands taken S. Oak

Township N. 5 North, Range N. 4 East 2. Mer

Range line - Var. 6' 30" E

North Between Ranges 4 & 5. Township 5 North

On the East Sides of Sec. 12

50.00 To old gr. Sec. corner

50.00 Set post corner of Sec. 12

Beech 12 S 26 W 5

do 6 S 53 E 14

North On the East Sides of Sec. 1

40.00 gr. Sec. corner Sugar 10 S 15 E 34

do 10 S 67 E 24

gr. Sec. corner

67.07 Set post corner of Town 5 Range 6 in Range 4 & 5

Beech 20 S 52 W 13

do 9 S 53 W 13

Rich land. Timber Beech. Ash &c.

Surveyed by Arthur Menzie D. S.

Subdivisions of Township 5 N. 4 East

North Between Sec. 11 & 12

34.15 A. Beech 20 in. diam.

40.00 gr. Sec. corner Sugar 8 S 23 W 23

Quince 20 S 23 E 3

45.45 A. Spring run 5 lbs St. W

50.00 Set post corner of Sec. 1, 2, 11, 12

Sugar 8 S 2 W 30

Maple 8 S 56 W 15

Good farming land. Beech. Sugar &c.

North Between Sec. 1 & 2

40.00 gr. Sec. corner Beech 20 S 7 W 32

do 15 S 25 E 12

50.00 Set post on the River Bank

Maple 10 S 2 E 28

Elm 10 S 2 W 30

Land & Timber Same

East Between Sec. 10 & 12 On Brandon var. 700

40.00 Temporary gr. Sec. post

50.42 Intersected St & Line 8 lbs St. W Sec. corner

Land Rich. Beech. Poplar. Oak. Hickory &c.

West Corrected

40.36 gr. Sec. corner Buckeye 10 S 17 W 12

Beech 12 S 68 E 12

50.42 Section corner

North Between Sec. 14 & 15

40.00 To old gr. Sec. corner

55.00 A. Spring run 8 lbs S. W

50.00 Set post corner of Sec. 10, 11, 14, 15

Beech 38 S 10 E 10

do 4 S 51 W 5

Land Rich. Beech. Oak. Poplar. Maple &c.

East Between Sec. 11 & 14 On Brandon

40.00 Temporary gr. Sec. post

51.91 Intersected St & Line. South of Sec. corner

Land & Timber Same

West Corrected Between Sec. 11 & 14 Var. 6' 30" E.

40.95 gr. Sec. corner Beech 10 S 14 E 5

Poplar 40 S 14 W 13

51.91 Section corner

North Between Sec. 10 & 11

16.50 A. Poplar 30 in. diam.

28.50 A. Spring run 8 lbs St. W

40.00 gr. Sec. corner Beech 10 S 7 W 8

do 6 S 3 W 26

50.00 Set post corner of Sec. 2, 3, 10, 11

Bar. Elder 12 S 70 E 20

W. Ash 34 S 8 E 34

Land Rich. Beech. Oak. Poplar. Maple &c.

North Between Sec. 2 & 3

15.00 Set post on the River Bank

Hackberry 6 S 18 W 23

Bar. Elder 12 S 80 W 22

Land & Timber Same

North Between Sec. 15 & 16

40.00 gr. Sec. corner W. Ash 12 S 23 E 24

do 12 S 2 W 24

44.10 A. Beech 30 lbs St. W

50.00 Set post corner of Sec. 9, 10, 15, 16

Hackberry 12 S 3 E 43

Hickory 8 S 78 E 7

Land & Timber Same

North Between Sec. 9 & 10

20.12 Set post on the River Bank

Beech 8 S 56 W 10

Buckeye 7 S 21 E 15

Land & Timber Same

East Between Sec. 10 & 15 On Brandon

40.00 Temporary gr. Sec. post

49.05 Intersected St & Line 100 lbs South of Corner

Land & Timber Same

West Connected Between Sec 10 & 15. Mar. 9. 30
31.97 7/8 q. Sec. corner Ironwood 4 St 35 N 25
Elm 10 St 26 E 21

79.95 Section corner
East Between Sec 2 & 11 On Prandone

40.00 Temporary q. Sec. post
80.26 Intersected N & S line at Sec. corner

Same & Timber Same
West 60.13 q. Sec. corner N. Oak 12 St 29 E 3
Buckeye 12 St 36 N 17

80.26 Section corner

West Between Sec 3 & 10

21.69 Set post on the River Bank

Buckeye 5 St 50 E 11

Ashe 5 St 14 N 5

Same the same

West Between Sec 9 & 16

20.76 Set post on the River Bank

Buckeye 10 St 49 E 13

Ironwood 5 St 5 N 5

Same the same

North Between Sec 20 & 21

40.00 q. Sec. corner Oak 4 St 11 N 4

Beech 6 St 17 N 14

50.00 To the North side of lot boundary round 15th Mile

80.00 Set post corner of Sec 16, 17, 20, 21

Sugar 6 St 45 E 9

do 7 St 27 N 34

Same level. Timber. Beech. Sugar &c

East Between Sec 16 & 21 On Prandone

40.00 Temporary q. Sec. post

81.48 Intersected N & S line 13th North of Sec. corner

Same the same as above

West Connected

40.74 q. Sec. corner Beech 10 St 40 E 28

do 8 St 3 N 12

81.48 Section corner

North Between Sec 16 & 17

15.50 Set post on the River Bank

Blackberry 20 St 66 N 21

Sycamore 20 St 20 E 9

Same level. Timber. Beech. Sugar &c

West Between Sec 17 & 20

17.40 An. Elm 20 in. diam.

29.18 To A. Beech 20 in. diam. on River Bank

North Between Sec 29 & 30

40.00 Old q. Sec. corner

80.00 Set post corner of Sec 19, 20, 29, 30

Ironwood 6 St 83 N 12

Blackberry 18 St 47 N 28

Same level & Dick

East Between Sec 20 & 29 On Prandone

40.00 Temporary q. Sec. post

80.82 Intersected N & S line at Sec. corner

Same the same

West Connected

40.41 q. Sec. corner B. Walnut 10 St 4 E 29

Elm 5 St 19 E 9

80.82 Section corner

North Between Sec 19 & 20

29.00 Set post on the River Ironwood 6 St 40 E 21

Sugar 20 St 48 N 13

Same the same

West Between Sec 19 & 30

23.00 Set post on River bank

Sugar 12 St 50 E 10

do 12 St 57 E 15

Same the same

South Between Sec 1 & 2

5.65 To the Elm 12 in. diam. corner on the River

South Between Sec 2 & 3

7.30 An. Elm 12 in. diam.

30.00 Touches West bend of the River

40.00 q. Sec. corner Mulberry 18 St 41 E 17

B. Walnut 12 St 22 N 24

45.84 Set post on the River Bank

Cottonwood 8 St 18 N 12

South Between Sec 3 & 4

24.00 An. Elm 15 in. diam.

40.00 q. Sec. corner Beech 18 St 19 N 4

Ironwood 6 St 66 N 20

80.00 Set post corner of Sec 3, 4, 9, 10

Ashe 10 St 25 N 6

Beech 10 St 83 E 19

Same level & Dick

East Between Sec 3 & 10

40.00 q. Sec. corner on the River bank

Beech 18 St 60 N 11

Sugar 12 St 5 N 15

Same the same

South Between Sec 9 & 10

40.00 q. Sec. corner Blackberry 6 St 10 N 21

Buckeye 8 St 10 E 21

42.26 Set post cor. on River Hickory 10 St 30 N 16

Ashe 8 St 75 N 6

Same the same

South Between Sec 4 & 5

40.00 q. Sec. corner Maple 8 St 11 N 47

B. Oak 30 St 39 N 30

80.00 Set post corner of Sec 4, 5, 8, 9

Hickory 12 St 8 N 8

do 10 St 68 E 16

East Between Sec 4 & 9 On Prandone

20.00 N. Water Course South

40.00 Temporary q. Sec. post

80.00 Intersected N & S line at Sec. corner

Same level. Timber Oak. Hickory. Ashe.

Blackberry &c

West Connected Between Sec 4 & 9

40.00 q. Sec. corner N. Ashe 18 St 81 E 11

do 20 St 24 N 18

80.00 Section corner

South Between Sec 8 & 9

13.70 S. Cherry 20 in. diam.

40.00 q. Sec. corner Beech 20 St 33 N 10

do 15 St 43 E 19

80.00 Set post corner of Sec 8, 9, 16, 17

Blackberry 10 St 19 E 38

Red. Oak 8 St 12 N 8

Same level & Dick

East Between Sec 9 & 16

40.00 q. Sec. corner Elm 20 St 56 N 40

Sycamore 19 St 77 E 26

44.00 To a Maple 6 in. diam. corner on the River

South Between Sec 16 & 17

10.00 S. Spruce 3 chains wide

40.00 q. Sec. post

50.50 To River Bank

South Between Sec 5 & 6

40.00 q. Sec. corner Beech 12 St 2 N 5

do 10 St 3 E 20

80.00 Set post corner of Sec 5, 6, 7, 8

Ashe 6 St 30 N 11

Ironwood 6 St 61 N 10

Same level. Elm. Ashe & Maple

East Between Sec 5 & 8 On Prandone

40.00 Temporary q. Sec. post

80.00 Intersected N & S line 8th South of corner

Same & Timber Same

West Connected

40.00 q. Sec. corner Hickory 20 St 73 N 12

Elm 12 St 58 E 19

80.00 Section corner

South Between Sec. 7 & 8
40.00 *gr. Sec. corner* Beech 6 S 32 E 21
M. Ash 10 S 31 W 26
80.00 *Set post corner of Sec. 7, 8, 17, 18*
Beech 10 S 55 E 30
do 10 S 5 E 12
Land Cont. Most part covered with Water
East Between Sec. 8 & 17 on Transition
40.00 *Temporary gr. Sec. post*
80.00 *Intersect of S & Line of the North of Sec. corner*
Sund. loc. Beech, Ash & S.
West cornered
40.00 *gr. Sec. corner* Beech 6 S 32 E 7
do 10 S 47 E 12
80.00 *Section corner*
South Between Sec. 17 & 18
55.40 *Am. Elm 15 in. diam.*
40.00 *gr. Sec. corner* Beech 20 North of
do 10 S 19 E 21
74.00 *Set post on the River bank* Sugar 9 S 40 W 15
do 10 S 40 W 15
Sund. & timber the same
East Between Sec. 18 & 19
40.00 *gr. Sec. corner* Beech 6 S 79 W 7
Sugar 5 S 35 E 21
78.22 *Set post on the River* Oak 6 S 55 W 7
M. Oak 10 S 56 E 9
East Between Sec. 19 & 20
20.04 *M. Hickory 24 in. diam.*
40.00 *gr. Sec. corner* Oak Walnut 10 S 58 E 11
Beech 20 S 87 W 41
51.00 *M. Maple 10 in. diam. corner on the River*
Sund. loc. Beech, Ash & Walnut

West Between Sec. 6 & 17
40.00 *gr. Sec. corner* Beech 10 S 53 E 21
do 12 S 56 W 27
85.00 *Set post on the West Boundary 22 lbs North*
of Sec. corner Beech 10 S 10 E 11
do 5 S 12 W 18
Sund. & timber same
West Between Sec. 7 & 18
40.00 *gr. Sec. corner* Loc. Elm 20 S 57 E
Hickory 24 S 15 W 5
84.00 *Set post on West boundary 18 lbs North*
of Sec. corner Beech 10 S 69 E 6
Maple 15 S 69 W 31
Sund. & timber same
Meanders of East Fork of White River
courses up the river from the corner on
the Range line Between Ranges 3 & 4.
S.E. line of the river cut 6.30

Courses	Distances
S 81 E	6.00
N 70 E	11.50
N 78 E	12.50
N 34 W	24.50
N 8 W	13.00
S 87 E	9.00
S 53 E	24.50
S 47 E	12.00
N 55 E	12.00
N 50 E	10.00
N 6 E	11.50
N 29 W	10.50
N 55 W	5.50
E	17.50
N 71 W	17.00
N 34 W	13.00
N 21 E	12.00

To corner of Sec. 19 & 20 N 50 E

S 84 E 15.00
S 75 E 5.50
S 81 E 32.50
S 89 E 4.00 To corner of Sec. 19 & 20
S 85 E 14.50
N 51 E 21.00
N 5 E 16.50
N 54 W 32.50
N 43 E 4.00
S 75 E 10.50
S 74 E 9.50
N 55 E 15.00
N 58 E 6.50
N 58 E 5.00 To corner of Sec. 17 & 20
N 50 E 12.00
N 41 W 38.00
N 72 E 8.50
S 83 E 27.50
S 80 E 14.50
N 50 E 5.90 To corner of Sec. 16 & 17
N 30 E 9.00
N 35 E 6.00
N 35 E 10.00
S 21 E 12.50
S 75 E 12.00
N 49 E 40.00
N 2 W 2.81 To H. Beech 30 lbs wide
E 4.19
N 20 W 21.50
N 55 E 7.50
N 33 E 7.00
N 12 E 6.80 To corner of Sec. 7 & 16
North 6.00
N 44 W 17.50
N 75 E 8.50

S 36 E 7.00
S 39 E 3.00
S 38 E 8.00
N 49 E 5.00
N 78 E 2.28 To corner of Sec. 7 & 10
N 43 E 12.50
N 47 E 12.50 To a bay
E 7.50
N 29 E 11.50 5 chains on this course is water run out of
the River in high water
N 73 E 10.50
N 30 E 35.30 To corner of Sec. 3 & 4 N 50 E
N 30 E 9.00
N 2 E 16.00
N 22 W 26.50
N 51 E 9.00
S 29 E 12.50
S 5 E 13.50
S 28 E 8.00
S 60 E 5.00
S 88 E 2.35 To corner of Sec. 2 & 3 S 50 E
N 74 E 9.00
N 20 E 6.50
N 2 W 3.00
N 22 W 14.50
N 45 E 11.50
N 24 E 4.00
N 72 E 11.50
N 1 E 3.64 To corner on North Boundary
Iron post on Town line, Sec. 2, Cont. up stream
S 30 W 5.50
S 7 E 7.35
S 35 E 8.00
S 87 E 8.00
N 49 E 30.50

297

S46 E 7.00		S18 N 2.93	
S37 E 3.00	To corner of Sec. 182 S. 14 E	S15 N 5.00	
S 8.00		S13 N 6.50	
S3 E 8.25		S16 N 4.50	To corner of Sec. 19 S 30
S31 E 8.50			S 14 E East
S51 E 8.50		S16 N 32.00	
S45 E 10.50		S13 N 17.00	
S50 E 8.00		S18 E 10.50	
S20 E 9.50		S51 E 10.50	
S34 E 3.11		East 21.50	
North 4.50	To H. boye 250 lbs wide	S79 E 41.50	
S 6.11		S75 E 6.50	
S20 N 13.50	To the corner on the North boundary	S53 E 12.50	
	of Town 5 in Range 4 East	S79 E 11.50	
boundaries	Distances measured on the N. W. side of the North	S77 N 9.00	
S72 E 6.00		S54 N 7.50	
S72 E 8.00		S59 N 11.00	
S22 E 6.50		S13 N 11.00	
S13 N 3.00		S21 E 4.00	corner of Sec. 18 S 19
S25 N 6.00			S 14 E East
S58 N 11.00		S35 E 4.50	
S23 N 5.50	corner on Range line	S60 E 2.14	corner of Sec. 17 S 18
S24 N 3.50			S 14 E East
S4 N 6.00		S60 E 3.00	
S26 E 3.78	corner on Range line	S56 E 7.00	
S26 E 3.00		S55 E 30.00	
S53 E 3.19		S28 E 12.50	
S60 E 6.50		S51 N 10.00	
East 8.00		S70 N 6.00	
S64 E 10.50		S43 N 11.50	
S46 E 2.78		S4 E 10.00	
S56 E 5.00		S39 E 9.00	
S46 E 19.00		S51 E 9.50	
S83 E 10.00		S64 E 6.00	
S26 E 8.00		S28 E 10.00	

298

S37 E 15.00		S16 N 8.00	
S72 E 13.50		S35 N 11.00	
S66 E 5.00	corner of Sec. 16 S 17	S7 N 12.00	
	S 14 E East	S50 E 5.00	A. Brooke 100 lbs wide
S20 E 3.00	A. Brooke 100 lbs wide	S 6.00	
S36 E 6.00		S79 E 10.00	
S53 E 13.50		S41 E 10.50	
East 7.00		S11 E 26.50	
S45 E 13.50		S75 E 6.00	corner to Sec. 2 S 3
S80 E 3.50			S 14 E East
S42 E 12.00		S77 E 6.00	
S65 E 14.50		S15 N 24.00	
S79 N 6.50		S46 E 5.00	Town line
S61 N 11.50			From Town line N. E. corner of Sec. 2 N 14 S 18
S45 N 9.00		S27 N 4.00	
S18 E 4.50		S50 E 8.00	
S52 E 13.00	corner of Sec. 9 S 16	S54 E 13.50	To Town line
	S 14 E East		From Town line N. E. corner of Sec. 2 N 14 S 18
S40 E 7.00		S60 E 8.50	
S10 N 7.00		S37 E 3.50	corner of Sec. 182
S33 N 10.00			S 14 E East
S11 N 12.00		S37 E 11.50	
S23 E 9.00		S13 E 9.00	
S52 E 9.50		S58 E 16.00	
S56 E 20.00		S60 E 12.00	
S41 E 12.00	corner of Sec. 9 S 10	S38 E 5.50	
	S 14 E East	S13 N 21.00	Town line
S37 E 4.00			Surveyed by Arthur, Annie D. S
S58 E 12.00			
S36 E 9.00			
S52 E 22.00			
S20 E 12.00	corner of Sec. 3 S 10		
	S 14 E East		
S46 E 14.00			
S21 E 14.00			
North 4.00			